

Test Report

Report No. RLSZA000071570004

Page 1 of 4

Applicant SHENZHEN XINYU PAPER CO.,LTD

Address B17-18,2TH FLOOR,THE THIRD OF BAGUA RD., FUTIAN AREA,
SHENZHEN,CHINA.

Report on the submitted sample(s) said to be

Sample Name 飘瑞
 Sample Description White paper
 Part No. PR系列
 Material 纸
 Supplier 新汕实业 / XINSHAN CO. , LTD
 Sample Received Date Oct. 22, 2008
 Testing Period Oct. 22, 2008 to Oct. 27, 2008

Test Requested As specified by client, to determine the Lead(Pb), Cadmium(Cd), Mercury(Hg), Hexavalent Chromium(Cr⁶⁺), Polybrominated Biphenyls(PBBs), Polybrominated Diphenyl Ethers(PBDEs) content in the submitted sample.

Test Method

Test Item(s)	Pretreatment Method	Measured Equipment(s)	Report Limit
Lead(Pb)	Refer to IEC 62321 111/95/CDV Ed.1 Sec.10	ICP-AES	2ppm
Cadmium(Cd)	Refer to IEC 62321 111/95/CDV Ed.1 Sec.10	ICP-AES	2ppm
Mercury(Hg)	Refer to IEC 62321 111/95/CDV Ed.1 Sec.7	ICP-AES	2ppm
Hexavalent Chromium(Cr ⁶⁺)	Refer to IEC 62321 111/95/CDV Annex C	UV-Vis	2ppm
Polybrominated Biphenyls(PBBs)	Refer to IEC 62321 111/95/CDV Annex A	GC-MSD	5ppm
Polybrominated Diphenyl Ethers(PBDEs)	Refer to IEC 62321 111/95/CDV Annex A	GC-MSD	5ppm

Test Result(s) Please refer to the following page(s).

Tested by 
 Approved by 
 Technical Manager



Inspected by 

Date Oct. 27, 2008

No. 21278192

Test Report

Report No. RLSZA000071570004

Page 2 of 4

Test Result(s)

Test Item(s)	Content
Lead(Pb)	N.D.
Cadmium (Cd)	N.D.
Mercury(Hg)	N.D.
Hexavalent Chromium (Cr ⁶⁺)	N.D.

Test Item(s)	Content
Polybrominated Biphenyls(PBBs)	
Monobromobiphenyl	N.D.
Dibromobiphenyl	N.D.
Tribromobiphenyl	N.D.
Tetrabromobiphenyl	N.D.
Pentabromobiphenyl	N.D.
Hexabromobiphenyl	N.D.
Heptabromobiphenyl	N.D.
Octabromobiphenyl	N.D.
Nonabromobiphenyl	N.D.
Decabromobiphenyl	N.D.

Test Item(s)	Content
Polybrominated Diphenyl Ethers(PBDEs)	
Monobromodiphenyl ether	N.D.
Dibromodiphenyl ether	N.D.
Tribromodiphenyl ether	N.D.
Tetrabromodiphenyl ether	N.D.
Pentabromodiphenyl ether	N.D.
Hexabromodiphenyl ether	N.D.
Heptabromodiphenyl ether	N.D.
Octabromodiphenyl ether	N.D.
Nonabromodiphenyl ether	N.D.
Decabromodiphenyl ether	N.D.

Note: -N.D. = Not Detected (<Report Limit)
 -ppm = mg/kg = parts per million

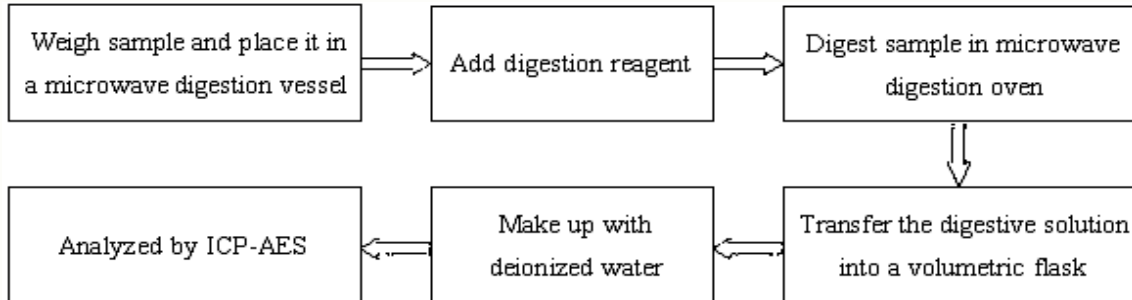
Test Report

Report No. RLSZA000071570004

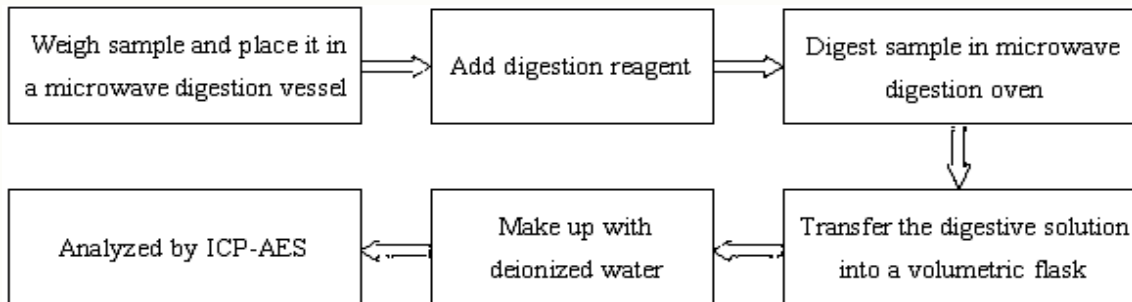
Page 3 of 4

Test Process

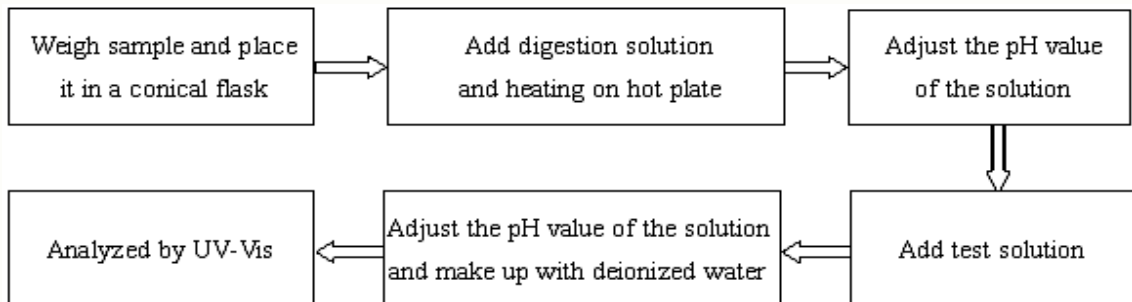
1. Lead(Pb), Cadmium(Cd)



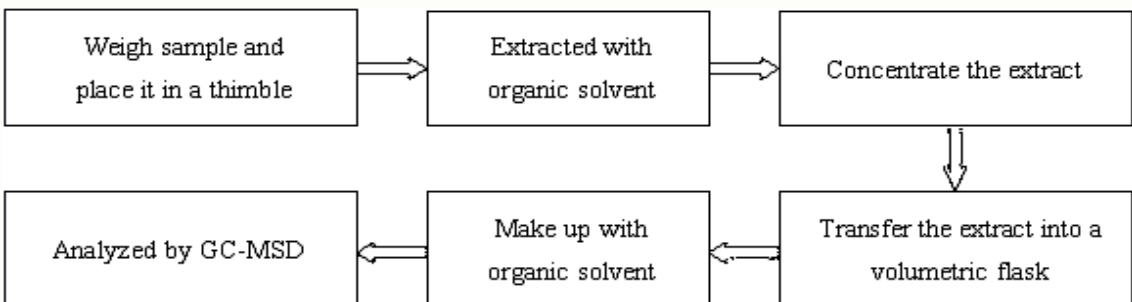
2. Mercury(Hg)



3. Hexavalent Chromium(Cr⁶⁺)



4. Polybrominated Biphenyls(PBBs), Polybrominated Diphenyl Ethers(PBDEs)

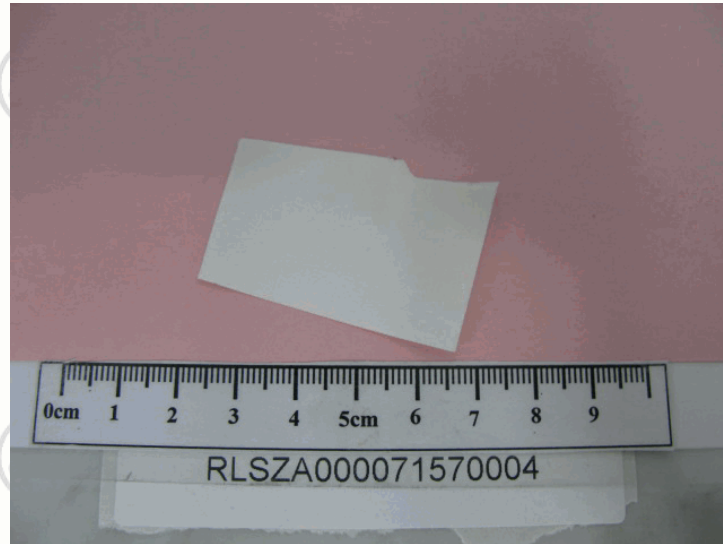


Test Report

Report No. RLSZA000071570004

Page 4 of 4

Photo(s) of the sample(s)



*** End of report ***

This report is considered invalidated without the Special Seal for Inspection of the CTI. This report shall not be altered, increased or deleted. The results shown in this test report refer only to the sample(s) tested. Without written approval of CTI, this test report shall not be copied except in full and published as advertisement.

Building C, Hongwei Industrial Zone, Baoan 70 District, Shenzhen